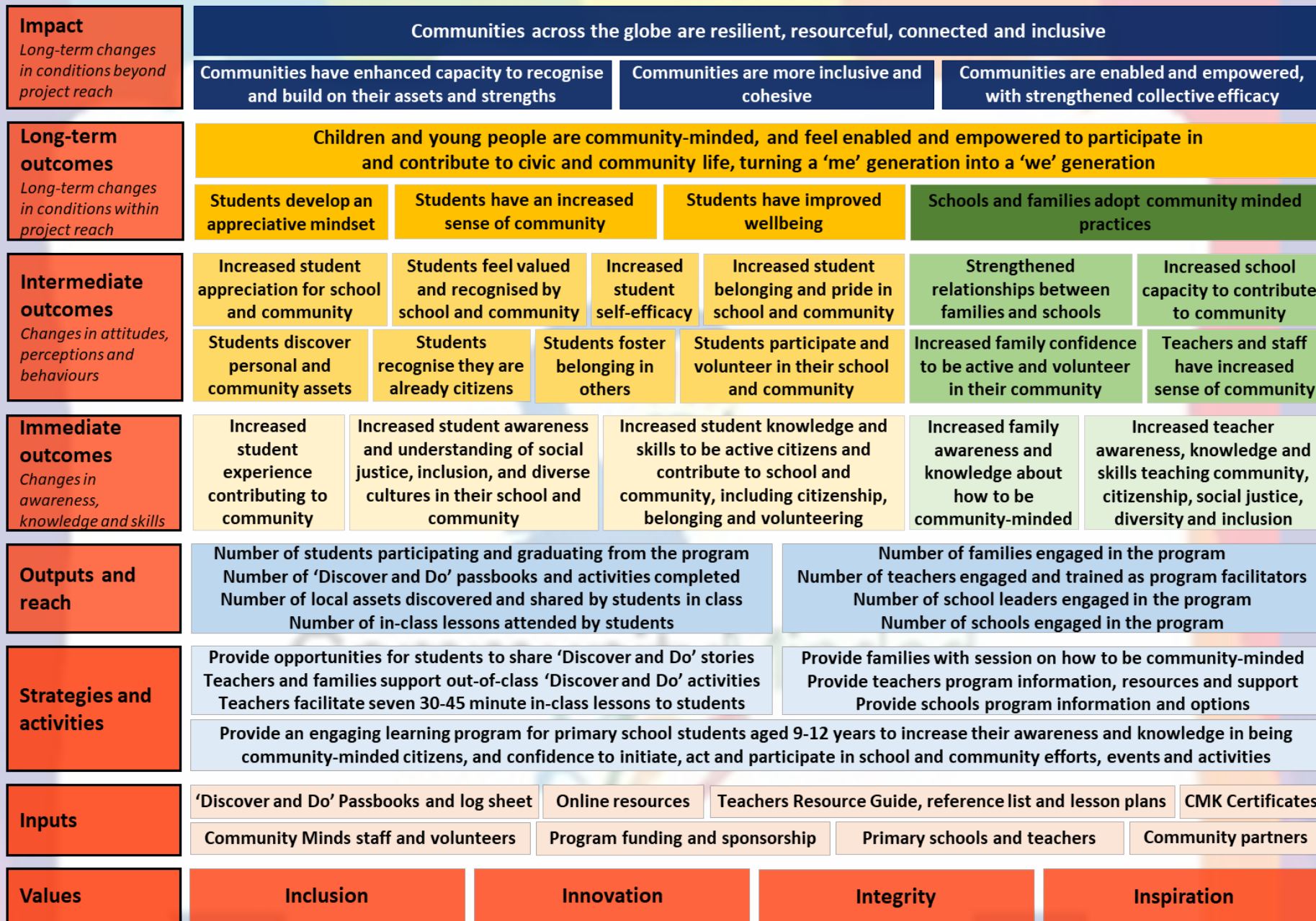


Community Minded Kids: Program logic



Impact
Long-term changes in conditions beyond project reach

Communities across the globe are resilient, resourceful, connected and inclusive

Communities have enhanced capacity to recognise and build on their assets and strengths **Communities are more inclusive and cohesive** **Communities are enabled and empowered, with strengthened collective efficacy**

Long-term outcomes
Long-term changes in conditions within project reach

Children and young people are community-minded, and feel enabled and empowered to participate in and contribute to civic and community life, turning a 'me' generation into a 'we' generation

Students develop an appreciative mindset **Students have an increased sense of community** **Students have improved wellbeing** **Schools and families adopt community minded practices**

Intermediate outcomes
Changes in attitudes, perceptions and behaviours

Increased student appreciation for school and community **Students feel valued and recognised by school and community** **Increased student self-efficacy** **Increased student belonging and pride in school and community** **Strengthened relationships between families and schools** **Increased school capacity to contribute to community**

Students discover personal and community assets **Students recognise they are already citizens** **Students foster belonging in others** **Students participate and volunteer in their school and community** **Increased family confidence to be active and volunteer in their community** **Teachers and staff have increased sense of community**

Immediate outcomes
Changes in awareness, knowledge and skills

Increased student experience contributing to community **Increased student awareness and understanding of social justice, inclusion, and diverse cultures in their school and community** **Increased student knowledge and skills to be active citizens and contribute to school and community, including citizenship, belonging and volunteering** **Increased family awareness and knowledge about how to be community-minded** **Increased teacher awareness, knowledge and skills teaching community, citizenship, social justice, diversity and inclusion**

Outputs and reach

Number of students participating and graduating from the program
Number of 'Discover and Do' passbooks and activities completed
Number of local assets discovered and shared by students in class
Number of in-class lessons attended by students

Number of families engaged in the program
Number of teachers engaged and trained as program facilitators
Number of school leaders engaged in the program
Number of schools engaged in the program

Strategies and activities

Provide opportunities for students to share 'Discover and Do' stories
Teachers and families support out-of-class 'Discover and Do' activities
Teachers facilitate seven 30-45 minute in-class lessons to students

Provide families with session on how to be community-minded
Provide teachers program information, resources and support
Provide schools program information and options

Provide an engaging learning program for primary school students aged 9-12 years to increase their awareness and knowledge in being community-minded citizens, and confidence to initiate, act and participate in school and community efforts, events and activities

Inputs

'Discover and Do' Passbooks and log sheet **Online resources** **Teachers Resource Guide, reference list and lesson plans** **CMK Certificates**

Community Minds staff and volunteers **Program funding and sponsorship** **Primary schools and teachers** **Community partners**

Values

Inclusion **Innovation** **Integrity** **Inspiration**